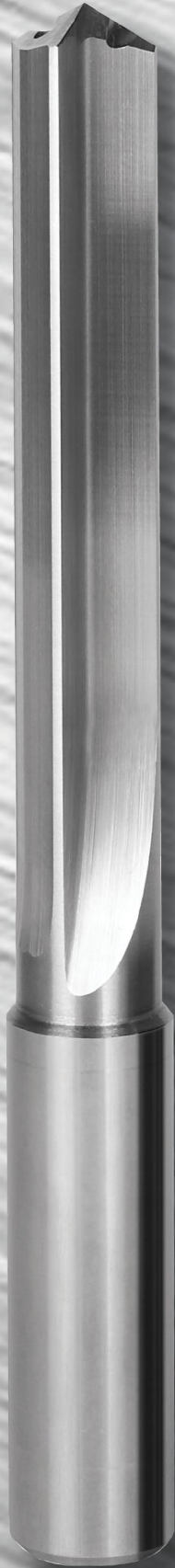


TECHNO DRILL  
**HPT**®



24E-D

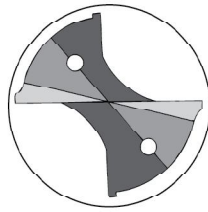
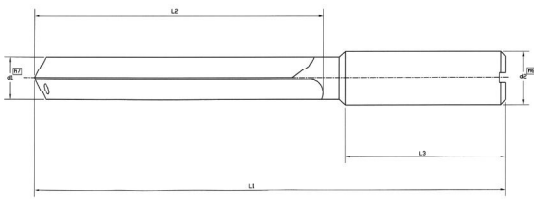
-  **Punta in metallo duro ad elica dritta, per foratura profonda, lavorazione in orizzontale. Per ghisa e leghe.**
-  **Solid carbide drill, for deep drilling with straight groove, horizontal workmanship. Suggested for cast iron ad alloys.**
-  **Foret carbure, pour perçage profond avec goujures droit, exécutions horizontal. Recommandé pour fonte et alliages.**



Materiale	Gruppo Materiale	VT	AV							
			Ø 6	Ø 8	Ø 10	Ø 12	Ø 14	Ø 16	Ø 20	
1	1.1 Acciaio Dolce Magnetico - Magnetic Soft Iron									
	1.2 Acciaio da Costruzione - Structural Case Hardened Steel									
	1.3 Acciaio al Carbonio - Carbon Steel									
	1.4 Acciaio Legato - Alloy Steel									
	1.5 Acciaio Legato Temprato - Alloy Heat Treated Steel									
	1.6 Acciaio Legato Temprato - Alloy Heat Treated Steel									
	1.7 Acciaio Legato 45 HRC - Hardened Steel to 45 HRC									
	1.8 Acciaio Legato 58 HRC - Hardened Steel to 58 HRC									
2	2.1 Acciaio Inossidabile - Stainless steel									
	2.2 Austenico - Austenic									
	2.3 Ferrico + Austenico - Ferritic Austenic									
3	3.1 Ghisa lamellare - Grey Cast Iron	120-160	0,20	0,25	0,26	0,30	0,35	0,40	0,45	
	3.2 Ghisa lamellare trattata - Grey Cast Iron heat treated	100-120	0,20	0,25	0,26	0,30	0,32	0,38	0,40	
	3.3 Ghisa sferoidale - Spher Cast Iron	120-160	0,20	0,25	0,26	0,30	0,35	0,40	0,45	
	3.4 Ghisa sferoidale trattata - Sphere Cast Iron heat treated	100-120	0,18	0,22	0,25	0,26	0,30	0,35	0,40	
	3.5 Ghisa sferoidale trattata - Sphere Cast Iron heat treated	100-120	0,18	0,22	0,24	0,26	0,30	0,35	0,40	
	3.6 Ghisa malleabile - Malleable Iron	140-200	0,25	0,28	0,30	0,35	0,38	0,40	0,45	
	3.7 Ghisa Malleabile trattata - Malleable Iron treated	120-160	0,20	0,22	0,24	0,26	0,30	0,35	0,40	
4	4.1 Titanio Non Legato - Pure Titanium									
	4.2 Titanio Legato - Titanium Alloys									
	4.3 Titanio Legato - Titanium Alloys									
5	5.1 Nichel non legato - Pure Nichel									
	5.2 Nichel legato - Nichel alloys heat resistant									
	5.3 Nichel legato - Nichel alloys high heat resistant									
6	6.1 Rame non legato - Non-alloy copper									
	6.2 Ottone, Bronzo - Short chip brass, bronze, red brass									
	6.3 Ottone a truciolo lungo - long chip brass									
	6.4 Bronzo alta resistenza - Cu-Al-Fe alloy (Ampco)									
7	7.1 Alluminio MG non legato - Alu MG Non Alloy									
	7.2 Alluminio Legato ≤ 5% Si - Alu Cast Alloy Si ≤ 5%									
	7.3 Alluminio Legato ≥ 5% ≤ 10 Si - Alu Cast Alloy Si ≥ 5% ≤ 10									
	7.4 Alluminio Legato ≥ 10% Si - Alu Cast Alloy Si ≥ 10%									
8	6.1 Termoplastici - Thermoplastics									
	6.2 Plastiche termindurenti - Thermosettings plastics									
	6.3 Plastiche rinforzate - Fibre reinforced plastics									

Gruppi Materiali: 1- Acciaio 2 - Acciai Trattati 3- Ghisa 4 - Leghe di Titanio 5 - Leghe di Nichel 6 - Leghe di Rame, Bronzo, Ottone 7 - Leghe di Alluminio 8 - Materie Plastiche

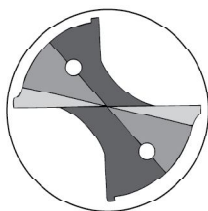
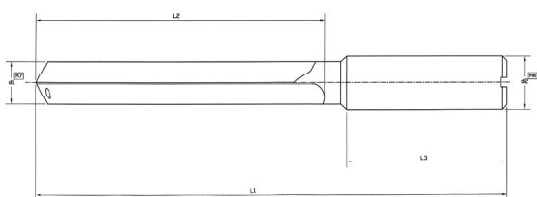
Groups: 1 - Steel 2 - Stainless Steel 3 - Cast iron 4 -Titanium 5 - Nichel -Copper 7 - Aluminium / Magnesium 8 - Plastics



## ZYF-D 5xØ

Ø	Ø Gambo	L3	L2	L1	Cod.	€
4,0	6	36	42	80	TDZYFD5D04000	64,00
4,2	6	36	42	80	TDZYFD5D04200	64,00
4,5	6	36	42	80	TDZYFD5D04500	64,00
4,8	6	36	42	80	TDZYFD5D04800	64,00
5,0	6	36	42	80	TDZYFD5D05000	64,00
5,1	6	36	42	80	TDZYFD5D05100	64,00
5,2	6	36	42	80	TDZYFD5D05200	64,00
5,5	6	36	42	80	TDZYFD5D05500	64,00
6,0	6	36	42	80	TDZYFD5D06000	64,00
6,5	8	36	42	90	TDZYFD5D06500	69,00
6,8	8	36	52	90	TDZYFD5D06800	69,00
7,0	8	36	52	90	TDZYFD5D07000	69,00
7,5	8	36	52	90	TDZYFD5D07500	69,00
7,8	8	36	52	90	TDZYFD5D07800	69,00
8,0	8	36	52	90	TDZYFD5D08000	69,00
8,1	10	40	60	102	TDZYFD5D08100	88,00
8,2	10	40	60	102	TDZYFD5D08200	88,00
8,5	10	40	60	102	TDZYFD5D08500	88,00
8,8	10	40	60	102	TDZYFD5D08800	88,00
9,0	10	40	60	102	TDZYFD5D09000	88,00
9,5	10	40	60	102	TDZYFD5D09500	88,00
9,8	10	40	60	102	TDZYFD5D09800	88,00
10,0	10	40	60	102	TDZYFD5D10000	88,00
10,2	12	45	73	120	TDZYFD5D10200	124,00
10,3	12	45	73	120	TDZYFD5D10300	124,00
10,5	12	45	73	120	TDZYFD5D10500	124,00
10,8	12	45	73	120	TDZYFD5D10800	124,00
11,0	12	45	73	120	TDZYFD5D11000	124,00
11,5	12	45	73	120	TDZYFD5D11500	124,00
11,8	12	45	73	120	TDZYFD5D11800	124,00
12,0	12	45	73	120	TDZYFD5D12000	124,00
12,5	14	45	78	125	TDZYFD5D12500	162,00
12,8	14	45	78	125	TDZYFD5D12800	162,00
13,0	14	45	78	125	TDZYFD5D13000	162,00
13,5	14	45	78	125	TDZYFD5D13500	162,00
13,8	14	45	78	125	TDZYFD5D13800	162,00
14,0	14	45	78	125	TDZYFD5D14000	162,00
14,5	16	48	85	135	TDZYFD5D14500	210,00
15,0	16	48	85	135	TDZYFD5D15000	210,00
15,3	16	48	85	135	TDZYFD5D15300	210,00
15,5	16	48	85	135	TDZYFD5D15500	210,00
16,0	16	48	85	135	TDZYFD5D16000	210,00
16,5	18	48	95	145	TDZYFD5D16500	278,00
17,0	18	48	95	145	TDZYFD5D17000	278,00
17,5	18	48	95	145	TDZYFD5D17500	278,00
18,0	18	48	95	145	TDZYFD5D18000	278,00
18,5	20	50	103	155	TDZYFD5D18500	344,00
19,0	20	50	103	155	TDZYFD5D19000	344,00
19,5	20	50	103	155	TDZYFD5D19500	344,00
20,0	20	50	103	155	TDZYFD5D20000	344,00

**Altri diametri e misure a richiesta**  
**Other diameters and length available on request**  
**Autres diamètres sur demande**

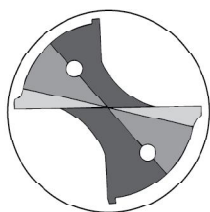
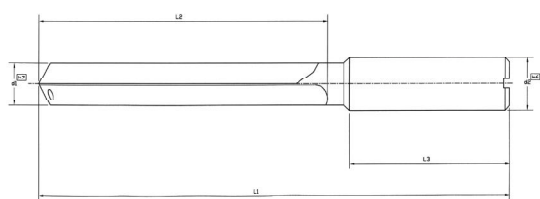


## ZYF-D 8xØ

Ø	Ø Gambo	L3	L2	L1	Cod.	€
5,0	6	36	57	95	TDZYFD8D05000	89,00
5,1	6	36	57	95	TDZYFD8D05100	89,00
5,2	6	36	57	95	TDZYFD8D05200	89,00
5,5	6	36	57	95	TDZYFD8D05500	89,00
6,0	6	36	57	95	TDZYFD8D06000	89,00
6,5	8	36	69	107	TDZYFD8D06500	118,00
6,8	8	36	69	107	TDZYFD8D06800	118,00
7,0	8	36	69	107	TDZYFD8D07000	118,00
7,5	8	36	69	107	TDZYFD8D07500	118,00
7,8	8	36	69	107	TDZYFD8D07800	118,00
8,0	8	36	69	107	TDZYFD8D08000	118,00
8,1	10	40	86	126	TDZYFD8D08100	164,00
8,2	10	40	86	126	TDZYFD8D08200	164,00
8,5	10	40	86	126	TDZYFD8D08500	164,00
8,8	10	40	86	126	TDZYFD8D08800	164,00
9,0	10	40	86	126	TDZYFD8D09000	164,00
9,5	10	40	94	134	TDZYFD8D09500	172,00
9,8	10	40	94	134	TDZYFD8D09800	172,00
10,0	10	40	94	134	TDZYFD8D10000	172,00
10,2	12	45	110	157	TDZYFD8D10200	216,00
10,3	12	45	110	157	TDZYFD8D10300	216,00
10,5	12	45	110	157	TDZYFD8D10500	216,00
10,8	12	45	110	157	TDZYFD8D10800	216,00
11,0	12	45	110	157	TDZYFD8D11000	216,00
11,5	12	45	110	157	TDZYFD8D11500	216,00
11,8	12	45	110	157	TDZYFD8D11800	216,00
12,0	12	45	110	157	TDZYFD8D12000	216,00
12,5	14	45	134	181	TDZYFD8D12500	278,00
12,8	14	45	134	181	TDZYFD8D12800	278,00
13,0	14	45	134	181	TDZYFD8D13000	278,00
13,5	14	45	134	181	TDZYFD8D13500	278,00
13,8	14	45	134	181	TDZYFD8D13800	278,00
14,0	14	45	134	181	TDZYFD8D14000	278,00
14,5	16	48	155	205	TDZYFD8D14500	369,00
15,0	16	48	155	205	TDZYFD8D15000	369,00
15,3	16	48	155	205	TDZYFD8D15300	369,00
15,5	16	48	155	205	TDZYFD8D15500	369,00
16,0	16	48	155	205	TDZYFD8D16000	369,00

**Altri diametri e misure a richiesta**  
**Other diameters and length available on request**  
**Autres diamètres sur demande**

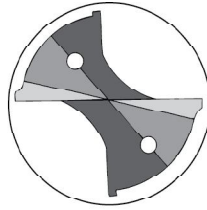
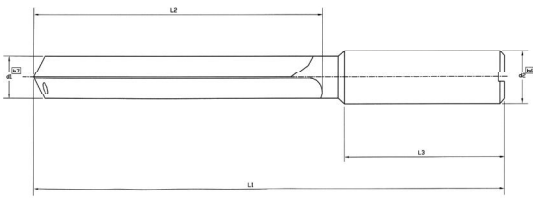
# ZYF-D



## ZYF-D 10xØ

Ø	Ø Gambo	L3	L2	L1	Cod.	€
5,0	6	36	72	110	TDZYFD10D0500	<b>114,00</b>
5,5	6	36	77	115	TDZYFD10D0550	<b>114,00</b>
6,0	6	36	77	115	TDZYFD10D0600	<b>114,00</b>
6,5	8	36	92	130	TDZYFD10D0650	<b>140,00</b>
7,0	8	36	92	130	TDZYFD10D0700	<b>140,00</b>
7,5	8	36	107	145	TDZYFD10D0750	<b>145,00</b>
8,0	8	36	107	145	TDZYFD10D0800	<b>145,00</b>
8,5	10	40	108	150	TDZYFD10D0850	<b>168,00</b>
9,0	10	40	108	150	TDZYFD10D0900	<b>168,00</b>
9,5	10	40	118	160	TDZYFD10D0950	<b>172,00</b>
10,0	10	40	128	170	TDZYFD10D1000	<b>184,00</b>
10,5	12	45	133	180	TDZYFD10D1050	<b>244,00</b>
11,0	12	45	133	180	TDZYFD10D1100	<b>244,00</b>
11,5	12	45	140	185	TDZYFD10D1150	<b>258,00</b>
12,0	12	45	140	185	TDZYFD10D1200	<b>258,00</b>
12,5	14	45	158	205	TDZYFD10D1250	<b>321,00</b>
13,0	14	45	158	205	TDZYFD10D1300	<b>321,00</b>
13,5	14	45	158	205	TDZYFD10D1350	<b>321,00</b>
14,0	14	45	173	220	TDZYFD10D1400	<b>330,00</b>
14,5	16	48	173	220	TDZYFD10D1450	<b>435,00</b>
15,0	16	48	180	230	TDZYFD10D1500	<b>466,00</b>
15,5	16	48	180	230	TDZYFD10D1550	<b>466,00</b>
16,0	16	48	180	230	TDZYFD10D1600	<b>466,00</b>

**Altri diametri e misure a richiesta**  
**Other diameters and length available on request**  
**Autres diamètres sur demande**

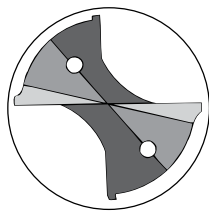
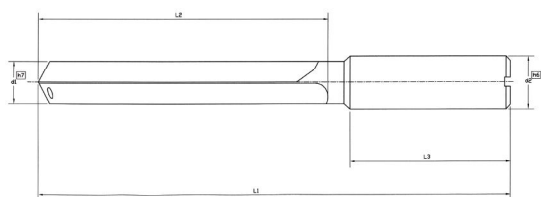


## ZYF-D 15 x Ø

Ø	Ø Gambo	L3	L2	L1	Cod.	€
5,0	6	36	88	126	TDZYFD15D0500	<b>139,00</b>
5,5	6	36	98	136	TDZYFD15D0550	<b>145,00</b>
6,0	6	36	107	145	TDZYFD15D0600	<b>156,00</b>
6,5	8	36	112	150	TDZYFD15D0650	<b>174,00</b>
7,0	8	36	117	155	TDZYFD15D0700	<b>179,00</b>
7,5	8	36	127	165	TDZYFD15D0750	<b>192,00</b>
8,0	8	36	137	175	TDZYFD15D0800	<b>200,00</b>
8,5	10	40	138	180	TDZYFD15D0850	<b>253,00</b>
9,0	10	40	148	190	TDZYFD15D0900	<b>266,00</b>
9,5	10	40	158	200	TDZYFD15D0950	<b>282,00</b>
10,0	10	40	168	210	TDZYFD15D0100	<b>297,00</b>
10,5	12	45	173	220	TDZYFD15D1050	<b>332,00</b>
11,0	12	45	183	230	TDZYFD15D1100	<b>350,00</b>
11,5	12	45	188	235	TDZYFD15D1050	<b>368,00</b>
12,0	12	45	193	240	TDZYFD15D1200	<b>394,00</b>
12,5	14	45	203	250	TDZYFD15D1250	<b>446,00</b>
13,0	14	45	208	255	TDZYFD15D1300	<b>468,00</b>
13,5	14	45	223	270	TDZYFD15D1350	<b>493,00</b>
14,0	14	45	243	290	TDZYFD15D1400	<b>517,00</b>
14,5	16	48	242	290	TDZYFD15D1450	<b>583,00</b>
15,0	16	48	252	300	TDZYFD15D1500	<b>608,00</b>
15,5	16	48	270	320	TDZYFD15D1550	<b>635,00</b>
16,0	16	48	270	320	TDZYFD15D1600	<b>635,00</b>

**Altri diametri e misure a richiesta**  
**Other diameters and length available on request**  
**Autres diamètres sur demande**

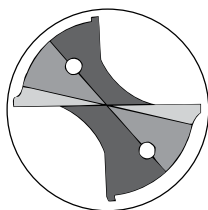
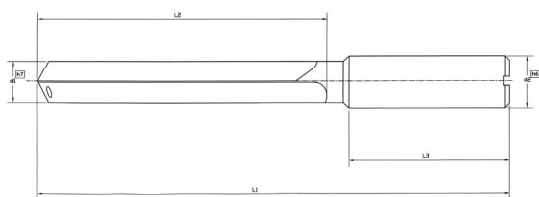
# ZYF-D



## ZYF-D 20 x Ø

Ø	Ø Gambo	L3	L2	L1	Cod.	€
5,0	6	36	112	150	TDZYFD20D0500	<b>174,00</b>
5,5	6	36	117	155	TDZYFD20D0550	<b>194,00</b>
6,0	6	36	127	165	TDZYFD20D0600	<b>226,00</b>
6,5	8	36	137	175	TDZYFD20D0650	<b>276,00</b>
7,0	8	36	152	190	TDZYFD20D0700	<b>302,00</b>
7,5	8	36	172	210	TDZYFD20D0750	<b>322,00</b>
8,0	8	36	182	220	TDZYFD20D0800	<b>338,00</b>
8,5	10	40	188	230	TDZYFD20D0850	<b>426,00</b>
9,0	10	40	198	240	TDZYFD20D0900	<b>446,00</b>
9,5	10	40	208	250	TDZYFD20D0950	<b>472,00</b>
10,0	10	40	213	255	TDZYFD20D1000	<b>490,00</b>
10,5	12	45	228	275	TDZYFD20D1050	<b>554,00</b>
11,0	12	45	238	285	TDZYFD20D1100	<b>568,00</b>
11,5	12	45	248	295	TDZYFD20D1150	<b>574,00</b>
12,0	12	45	263	310	TDZYFD20D1200	<b>594,00</b>

**Altri diametri e misure a richiesta**  
**Other diameters and length available on request**  
**Autres diamètres sur demande**



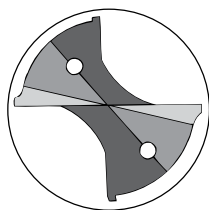
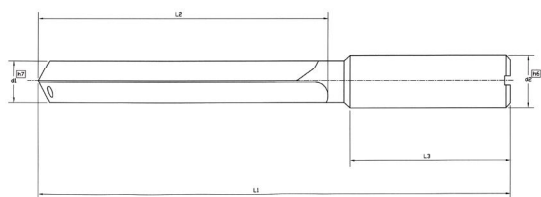
## ZYF-D 25 x Ø

Ø	Ø Gambo	L3	L2	L1	Cod.	€
5,0	6	36	142	180	TDZYFD25D0500	240,00
5,5	6	36	152	190	TDZYFD25D0550	248,00
6,0	6	36	167	205	TDZYFD25D0600	274,00
6,5	8	36	177	215	TDZYFD25D0650	328,00
7,0	8	36	192	230	TDZYFD25D0700	352,00
7,5	8	36	202	240	TDZYFD25D0750	404,00
8,0	8	36	217	255	TDZYFD25D0800	404,00
8,5	10	40	228	270	TDZYFD25D0850	462,00
9,0	10	40	238	280	TDZYFD25D0900	478,00
9,5	10	40	258	300	TDZYFD25D0950	504,00
10,0	10	40	268	310	TDZYFD25D1000	538,00

**Altri diametri e misure a richiesta**  
**Other diameters and length available on request**  
**Autres diamètres sur demande**



# ZYF-D



## ZYF-D 30 x Ø

Ø	Ø Gambo	L3	L2	L1	Cod.	€
5,0	6	36	162	200	TDZYFD30D0500	<b>298,00</b>
5,5	6	36	178	216	TDZYFD30D0550	<b>316,00</b>
6,0	6	36	197	235	TDZYFD30D0600	<b>346,00</b>
6,5	8	36	212	250	TDZYFD30D0650	<b>408,00</b>
7,0	8	36	227	265	TDZYFD30D0700	<b>438,00</b>
7,5	8	36	242	280	TDZYFD30D0750	<b>468,00</b>
8,0	8	36	262	300	TDZYFD30D0800	<b>518,00</b>

**Altri diametri e misure a richiesta**  
**Other diameters and length available on request**  
**Autres diamètres sur demande**