

TECHNO THREAD

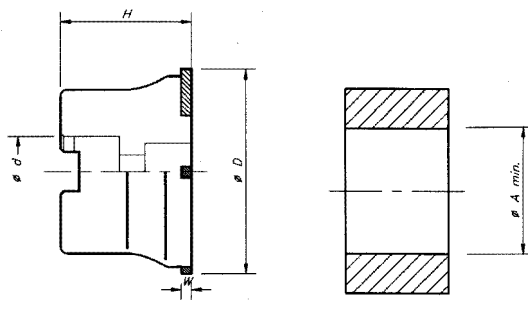




GROOVY MILL

GROOV MILL

 Frese per canalini.

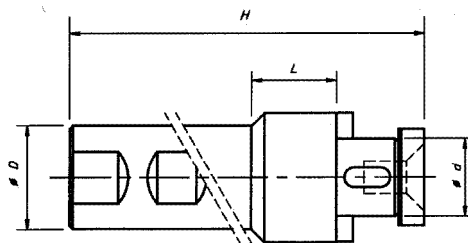
 Milling for seeger grooving.



ØD	ØA	Ød	H	Z	K	W			Codice	€
63	65	22	65	5	5	1,1 - 3,15	410	TCH07	GMS063	495,00

 Prolunga per fresa.

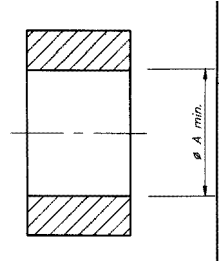
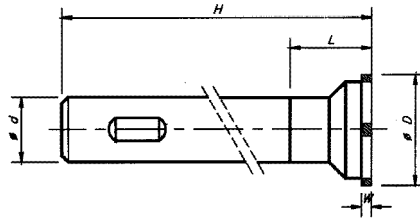
 Rallonge for mill.





ØD	ØA	Ød	H	Codice	€
32	22	60	150	PGMS032125	236,00
32	22	155	250	PGMS032225	277,00

 Frese per canalini.

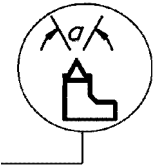
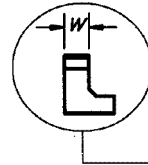
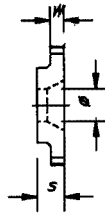
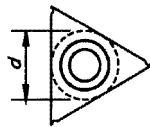
 Milling for seeger grooving.



ØD	ØA	Ød	H	L	Z	W			Codice	€
19	20	16	100	20	1	1,1-1,3	410	TCH07	GMSG019-N	194,00
19	20	16	180	20	1	1,1-1,3	410	TCH07	GMSG019-L	238,00
34	35	20	125	25	3	1,1-2,15	410	TCH07	GMSG034-N	285,00
34	35	20	210	25	3	1,1-2,15	410	TCH07	GMSG034-L	346,00

 Inserti per canalini e per filettare.

 Inserts for seeger grooving and threading.



d	s	Ø	W	Codice	IGM		IGM-AL - ALLUMINIO	
					MTA	€	MTA	€
9,52	3,75	4,5	1,10	IGM-110	17,50		20,89	19,00
9,52	3,75	4,5	1,30	IGM-130	17,50		20,89	19,00
9,52	3,75	4,5	1,60	IGM-160	17,50		20,89	19,00
9,52	3,75	4,5	1,85	IGM-185	17,50		20,89	19,00
9,52	3,75	4,5	2,15	IGM-215	17,50		20,89	19,00
9,52	3,75	4,5	2,65	IGM-265	17,50		20,89	19,00
9,52	3,75	4,5	3,15	IGM-315	17,50		20,89	19,00

d	s	Ø	α	Codice	FGM - K15F	FGM - MTA
					€	€
9,52	3,75	4,5	ISO 1,00	FGM-ISO-100	19,60	21,90
9,52	3,75	4,5	ISO 1,50	FGM-ISO-150	19,60	21,90
9,52	3,75	4,5	ISO 1,75	FGM-ISO-175	19,60	21,90
9,52	3,75	4,5	ISO 2,00	FGM-ISO-200	19,60	21,90
9,52	3,75	4,5	ISO 2,50	FGM-ISO-250	19,60	21,90
9,52	3,75	4,5	ISO 3,00	FGM-ISO-300	19,60	21,90
9,52	3,75	4,5	GAS 14"	FGM-GAS-140	19,60	21,90
9,52	3,75	4,5	GAS 11"	FGM-GAS-110	19,60	21,90
9,52	3,75	4,5	UNF 14"	FGM-UNF-140	19,60	21,90
9,52	3,75	4,5	UNF 12"	FGM-UNF-120	19,60	21,90
9,52	3,75	4,5	UNC 8"	FGM-UNC-800	19,60	21,90

370